

This map was prepared for assessment purpose only.

NW 1/4 SW 1/4 SEC. 6 T.2S. R.2E. W.M.
CLACKAMAS COUNTY

D. L. C.
JOSEPH KELLOGG NO'S 47 & 53

2 2E 6CB

1"=100'

Cancelled TL 2602
100
1601

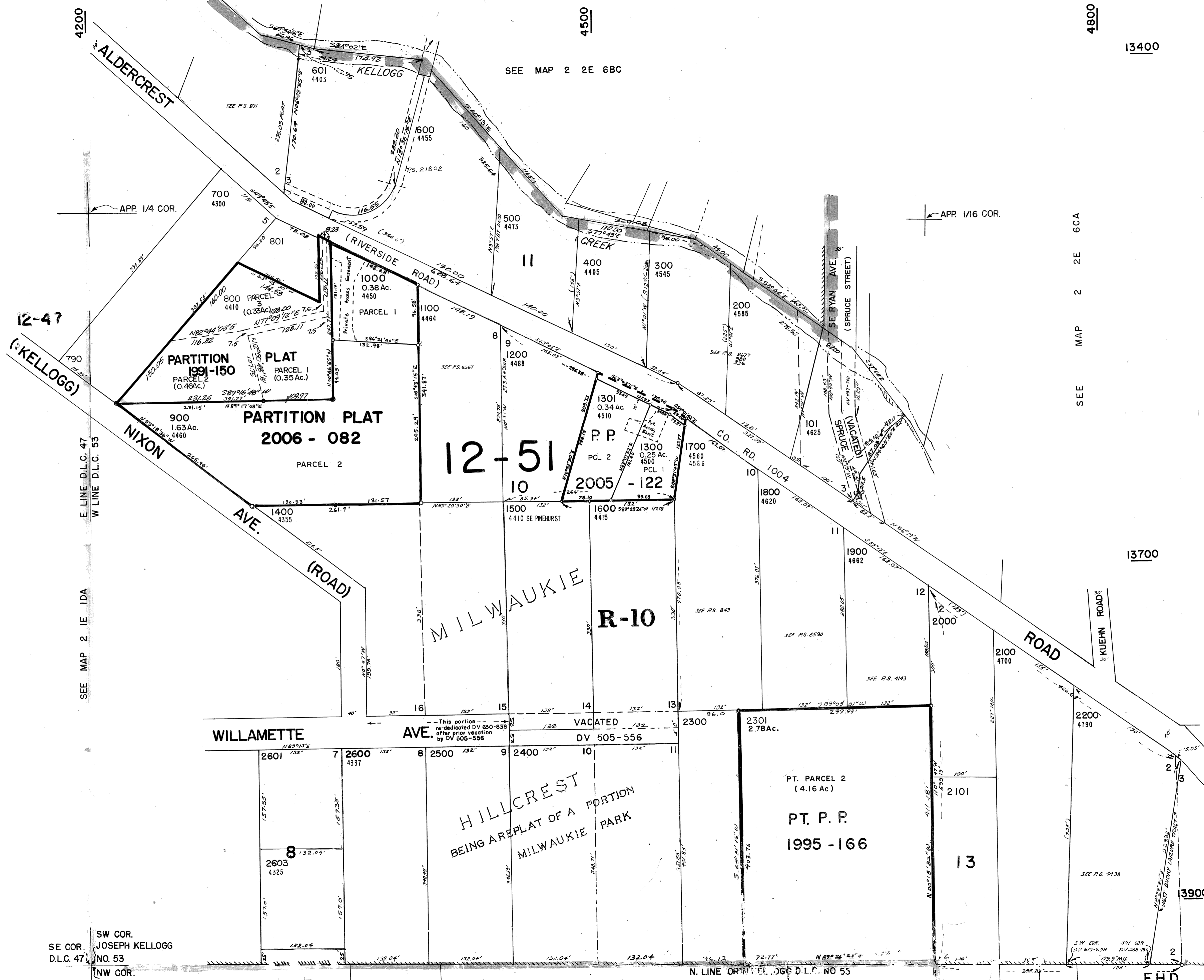
4800

13400

SEE MAP 2 2E 6CA

13700

13900



4200

4500

APP. 1/4 COR.

APP. 1/16 COR.

12-47
(KELLOGG)

E LINE D.L.C. 47
W LINE D.L.C. 53

SEE MAP 2 1E 1DA

SW COR.
SE COR. JOSEPH KELLOGG
D.L.C. 47 NO. 53
NW COR.
D.L.C. 55

12-51

R-10

WILLAMETTE AVE.

AVENUE
This portion re-dedicated DV 530-838 after prior vacation by DV 505-556
D.V. 505-556

HILLCREST
BEING A REPLAT OF A PORTION
MILWAUKIE PARK

PT. PARCEL 2
(4.16 Ac.)
PT. P. P.
1995 - 166

N. LINE ORIGINAL JOG D.L.C. NO 55

F.H.D.
2 2E 6CB
BOOK 15

SEE MAP 2 2E 6C1