

S1 SURVEY NUMBER 2000-000  
 S2 SURVEY NUMBER 7763  
 S3 SURVEY NUMBER 1546  
 D1 DEED PER FEE NO. 2006-086554  
 SN SURVEY NUMBER, CLACKAMAS COUNTY SURVEY RECORDS

APPROVED THIS \_\_\_\_\_ DAY OF \_\_\_\_\_

CLACKAMAS COUNTY SURVEYOR

ALL TAXES, FEES, ASSESSMENTS AND OTHER CH. PROVIDED BY O.R.S. 92.095 HAVE BEEN PAID TH 30, \_\_\_\_\_.

APPROVED THIS \_\_\_\_\_ DAY OF \_\_\_\_\_

RAY ERLAND, CLACKAMAS COUNTY ASSESSOR & COLLECTOR

BY: \_\_\_\_\_  
 DEPUTY

STATE OF OREGON }  
 COUNTY OF CLACKAMAS } S.S.

I DO HEREBY CERTIFY THAT THE ATTACHED PARTITION PL FOR RECORD ON THE \_\_\_\_\_ DAY OF \_\_\_\_\_ 20\_\_ AT \_\_\_\_\_ O'CLOCK \_\_\_\_ M.

SHERRY HALL, CLACKAMAS COUNTY CLERK

BY: \_\_\_\_\_  
 DEPUTY

**SURVEYOR'S CERTIFICATE**

I, WILLIAM H. SHENK, DO HEREBY CERTIFY THAT I HAVE PROPER MONUMENTS THE LAND REPRESENTED ON THE OF A PORTION OF LOT 3, BLOCK 41, "FIRST SUBDIVISION (PLAT NO. 103), SITUATED IN THE NORTHWEST ONE-QUARTER RANGE 1 EAST, OF THE WILLAMETTE MERIDIAN, CLACKAMAS COUNTY, OREGON.

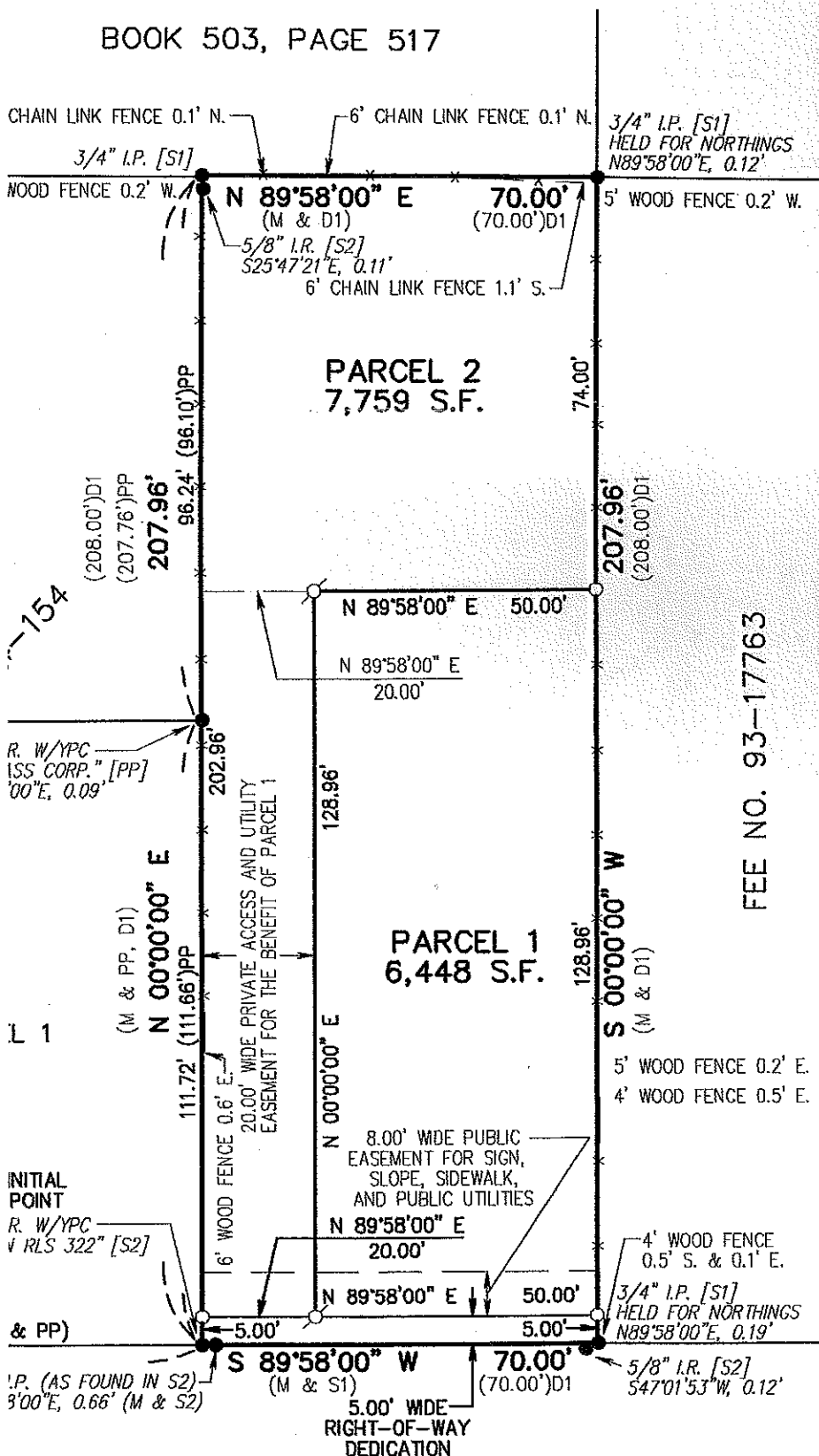
THAT AT THE INITIAL POINT OF SAID PLAT, I FOUND A STAMPED: "MASON RLS 322" AT THE SOUTHEAST CORNER OF CLACKAMAS COUNTY PLAT RECORDS, THENCE NORTH OF PARCEL 1 AND PROLONGATION THEREOF, A DISTANCE OF 207.96 FEET TO THE NORTHWEST CORNER OF THAT TRACT OF LAND DESCRIBED BY CLACKAMAS COUNTY DEED RECORDS; THENCE NORTH 89°58'00" EAST A DISTANCE OF 70.00 FEET TO THE NORTHEAST CORNER OF THE EAST LINE OF SAID TRACT, A DISTANCE OF 207.96 FEET TO THE NORTH RIGHT-OF-WAY LINE OF OAK GROVE BOULEVARD, 89°58'00" WEST, ALONG SAID NORTH RIGHT-OF-WAY LINE POINT.

CONTAINING 14,557 SQUARE FEET, MORE OR LESS.

I HEREBY CERTIFY THAT THIS IS AN EXACT COPY OF THE ORIGINAL PARTITION PLAT.

I CERTIFY THAT THIS PLAT WAS PREPARED USING HEWLETT-PACKARD PRODUCT #5 ON MILANO JPC-4M2 POLYESTER FILM.

**BOOK 503, PAGE 517**



FEE NO. 93-17763